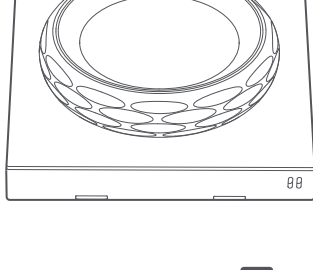


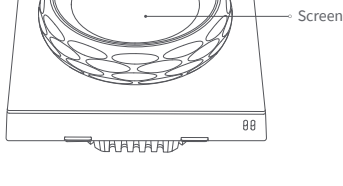
# Aqara



## Touchscreen Dial V1 EN

### Product Introduction

A smart rotary dial with vibration feedback and a 1.32" round touchscreen, which can intuitively control practically any smart home device. It is also equipped with a temperature-humidity sensor that can be used to control Aqara thermostats, as well as a presence sensor. It works over Wi-Fi, and can connect to third-party ecosystems via HomeKit, Matter or cloud integrations.

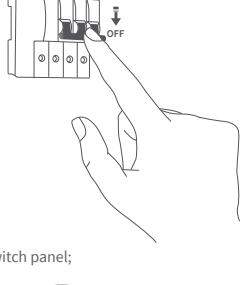


### Warnings

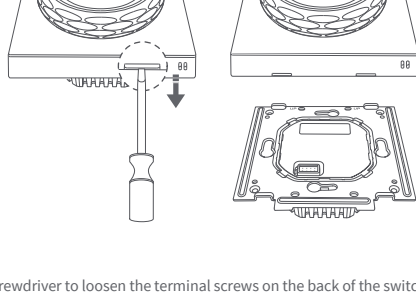
1. The installation of this product involves strong electric currents, and must be installed by professionals in accordance with electrical specifications and product instructions.
2. This product is for indoor use only. Do not use it in a humid environment or outdoors.
3. This product is designed for safe use only in areas below 2000 meters above sea level.
4. Avoid excessive moisture. Do not spill water or other liquids on this product.
5. Do not place this product near heat sources.
6. Do not attempt to repair this product by yourself. Repairs should be performed by authorized professionals.
7. Do not scratch the touch screen with sharp objects.

### Installation Methods

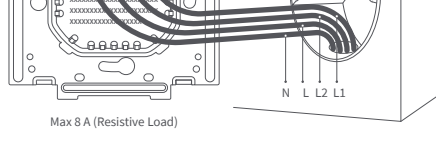
1. Before installation, please ensure that the main power supply is switched off at the circuit breaker.



2. Use a phillips head screwdriver to pry open the switch panel;

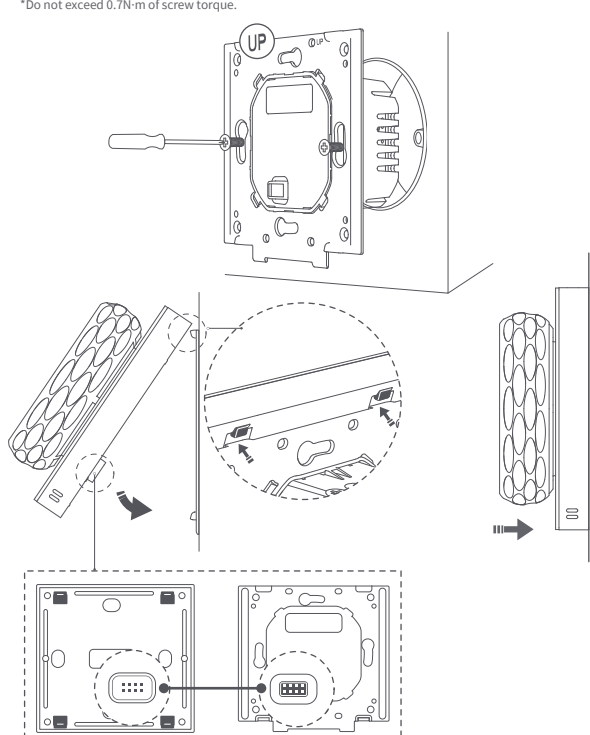


3. Use the screwdriver to loosen the terminal screws on the back of the switch. Connect the live wire to the L terminal, connect the neutral wire to N terminal, and connect the load (light) wire to the L1 and L2 terminal, and after confirming that the wiring is correct, tighten the terminal screws. Maximum load is 8 Amps (Resistive Load).

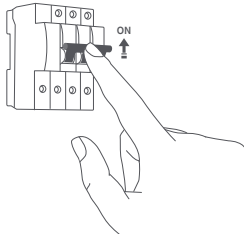


4. Use the included screws to secure the switch to the wall junction box and snap on the panel. Ensure you follow the panel's snap-on installation method carefully.

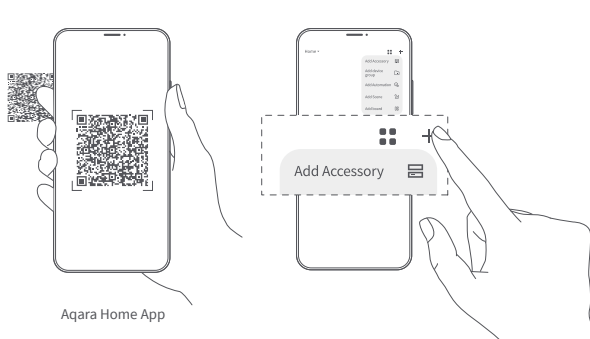
\*Do not exceed 0.7N-m of screw torque.



5. Turn on the main power switch. If the screen turns on normally, the switch is working properly.



6. Download the Aqara Home App  
Scan the following QR code to download the Aqara Home App.



7. Connect to Aqara Home:

After powering on, place your phone close to the device, open the Aqara Home App, click "+" in the upper right corner of the homepage, and select "Touchscreen Dial V1", and follow the instructions on the App. This product supports Aqara MagicPair. When the device is powered on and in pairing mode, it will be automatically discovered by the Aqara Home App (Bluetooth must be activated on the phone). At this time, you only need to select the device and complete the pairing according to the instructions on the App;

When pairing, please keep the phone as close to the product as possible and make sure that the Wi-Fi network the phone and the product are connected to is the same network.

Common reasons for pairing failure:

\*The Wi-Fi name or password contains special characters that the device does not support, which makes it impossible to connect to the router. Please change it to common characters and try again;

\* Check whether the router has enabled a Wi-Fi anti-swiping setting, which causes the device to be unable to connect to the Internet normally;

\* Check whether AP isolation is turned on on the router, which causes mobile phones to be unable to search for devices in the local area network.

### Product Specifications

Touchscreen Dial V1 EU

Model: DS-K01D

Dimensions: 86\*86\*62.1 mm (3.39 × 3.39 × 2.45 in.)

Operating Temperature: -10°C ~ 40°C (14°F ~ 104°F)

Operating Humidity: 0 ~ 95% RH, no condensation

Wireless Protocols: Wi-Fi IEEE 802.11 a/b/g/n/ac 2.4GHz/5GHz, Zigbee IEEE802.15.4,

Bluetooth

Electrical Rating: 200 - 240 VAC, 50/60 Hz, Max 8 A (Resistive Load), μ

What is in the Box: Touchscreen Dial V1 × 1, User Manual × 1, Compliance Statement × 1,

Screw Kit × 2

### FAQ

If you have any other questions about this product, you can find more product information on the following website:

<https://store-support.aqara.com/products/touchscreen-dial-v1/>

Manufacturer: Lumi United Technology Co., Ltd.

Address: Room 801-804, Building 1, Chongwen Park, Nanshan iPark, No. 3370, Liuxian Avenue, Fuguang Community, Taoyuan Residential District, Nanshan District, Shenzhen, China.

Online Customer Service: [<http://www.aqara.com/support>](<http://www.aqara.com/-support>)

Email: [support@aqara.com](mailto:support@aqara.com)